



Morecambe Offshore Windfarm: Generation Assets Plans

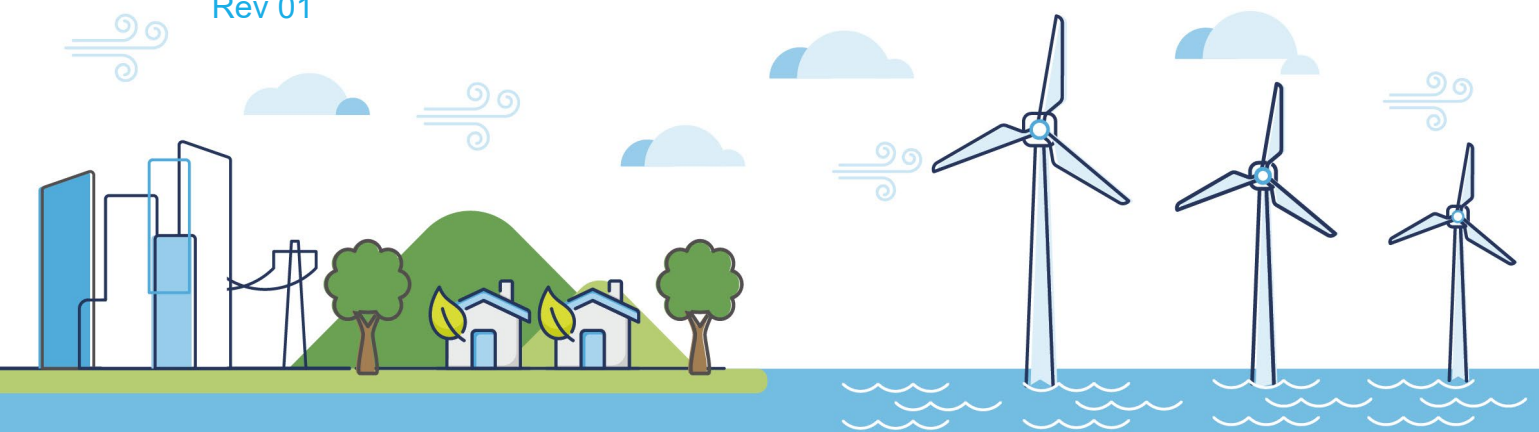
Volume 2

Offshore Order Limits and Grid Coordinates Plan

PINS Document Reference: 2.4

APFP Regulation: 5(2)(i)

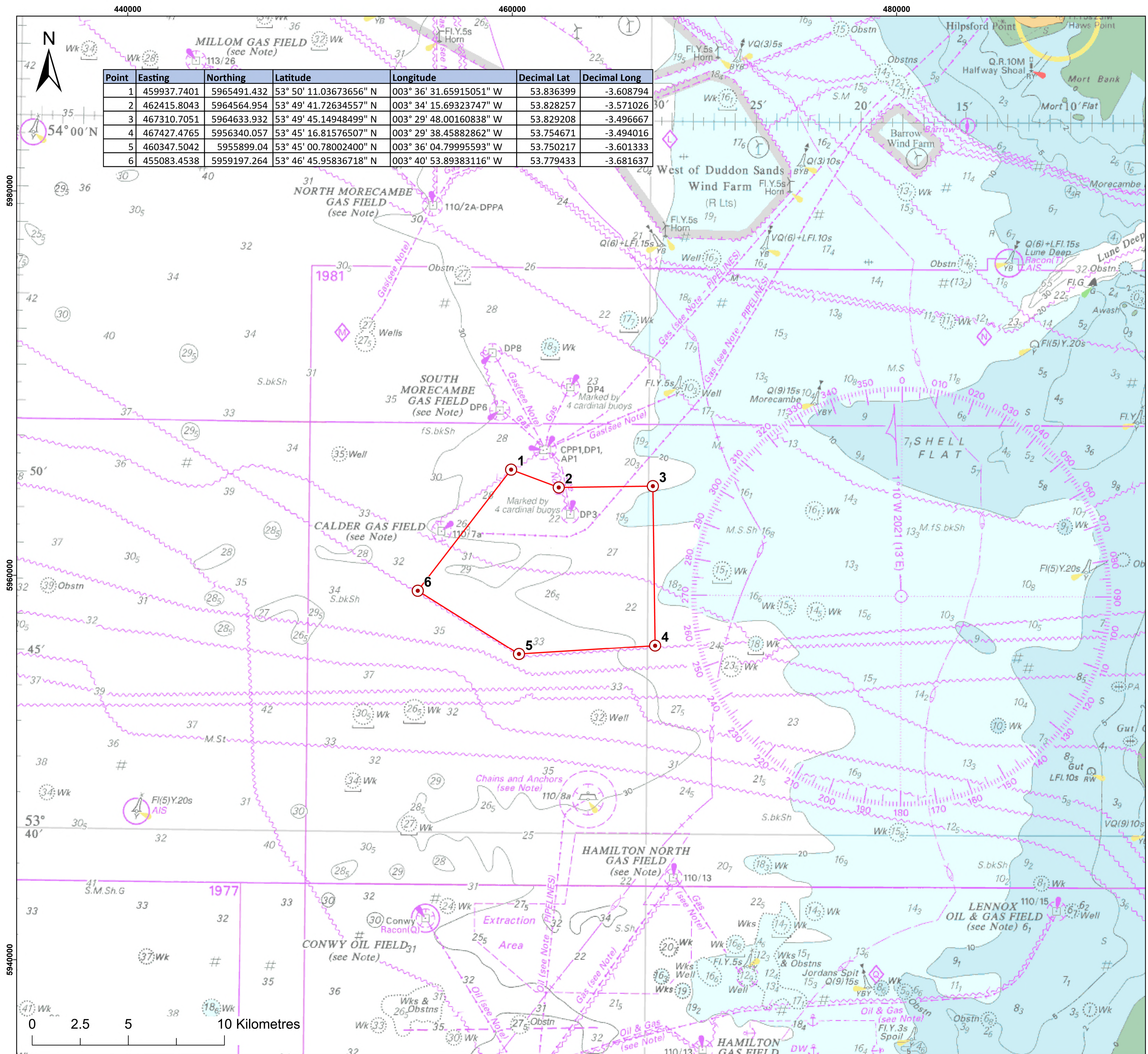
Rev 01



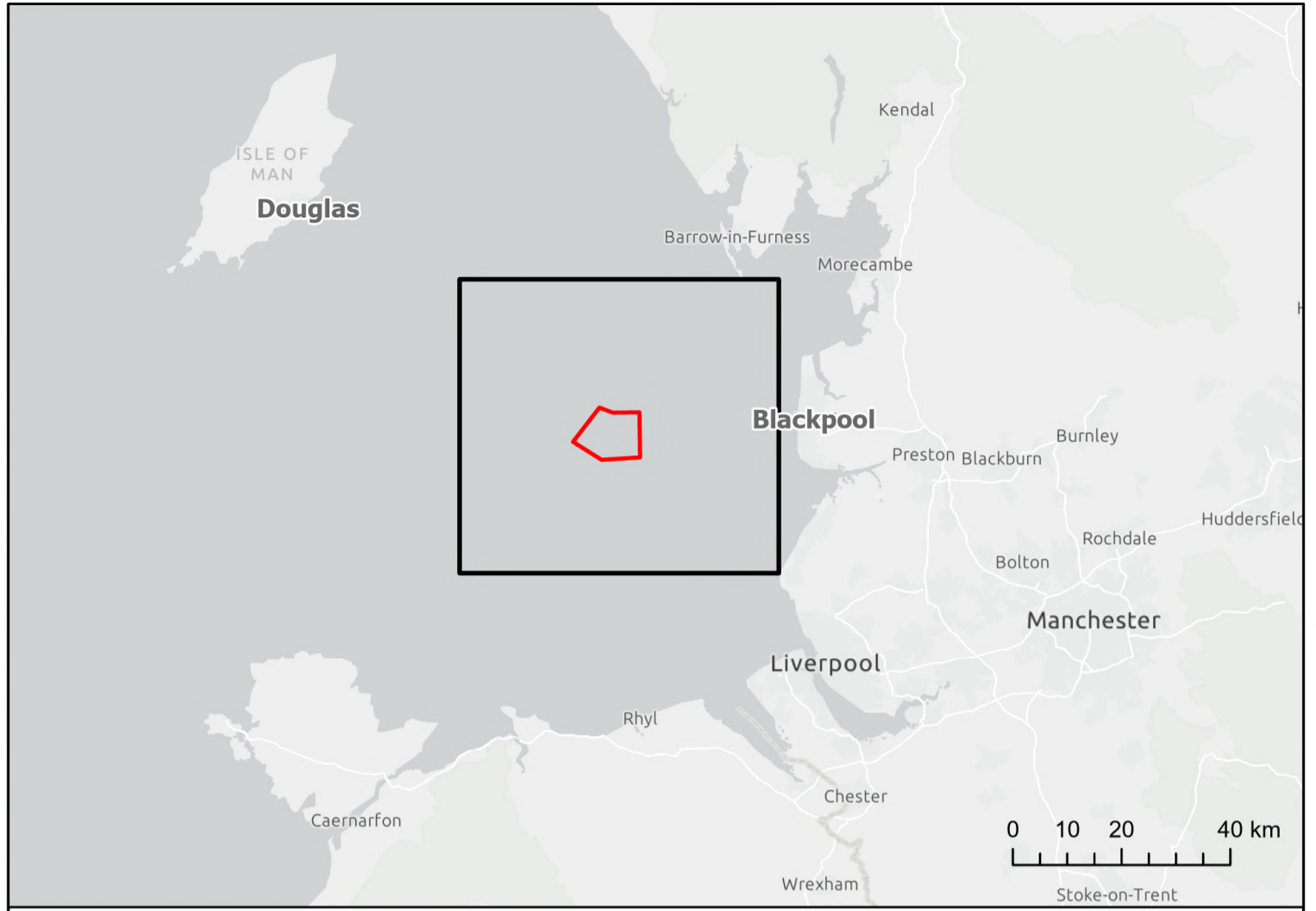
Document History

Doc No	MOR001-FLO-CON-ENV-PLN-0019	Rev	01
Alt Doc No	PC1165-RHD-ES-XX-PN-Z-0004		
Document Status	Approved for Use	Doc Date	May 2024
PINS Doc Ref	2.4	APFP Ref	5(2)(i)

Rev	Date	Doc Status	Originator	Reviewer	Approver	Modifications
01	May 2024	Approved for Use	Royal HaskoningDHV	Morecambe Offshore Windfarm Ltd	Morecambe Offshore Windfarm Ltd	n/a



Point	Easting	Northing	Latitude	Longitude	Decimal Lat	Decimal Long
1	459937.7401	5965491.432	53° 50' 11.03673656" N	003° 36' 31.65915051" W	53.836399	-3.608794
2	462415.8043	5964564.954	53° 49' 41.72634557" N	003° 34' 15.69323747" W	53.828257	-3.571026
3	467310.7051	5964633.932	53° 49' 45.14948499" N	003° 29' 48.00160838" W	53.829208	-3.496667
4	467427.4765	5956340.057	53° 45' 16.81576507" N	003° 29' 38.45882862" W	53.754671	-3.494016
5	460347.5042	5955899.04	53° 45' 00.78002400" N	003° 36' 04.79995593" W	53.750217	-3.601333
6	455083.4538	5959197.264	53° 46' 45.95836718" N	003° 40' 53.89383116" W	53.779433	-3.681637



Legend:
 Order Limits
● Order Limit Nodes

Main map scale is 1:100,000 when printed at A1 (native page size)
 Inset and key maps will vary.

© Haskoning DHV UK Ltd, 2024; Contains OS data © Crown copyright and database right, 2024; © British Crown and Oceanwise, 2024. All rights reserved. License No. EHS-EK001-FN800-004780. Not to be used for Navigation. Esri UK, Esri, TomTom, Garmin, FMO, NOAA, USGS

Project:
**Morecambe Offshore Windfarm: Generation Assets
 Development Consent Order Plans**

Title:
Offshore Order Limits and Grid Coordinates Plan

APFP Ref:	Doc Ref: 2.4				
	5(2)(i) Drawing No: PC1165-RHD-DC-OF-DG-Z-0086				
Revision:	Date:	Drawn:	Checked:	Size:	Scale:
P03	16/04/2024	SB	GC	A1	1:100,000
P04	01/05/2024	SB	GC	A1	1:100,000

Co-ordinate system: WGS 1984 UTM Zone 30N

